

HiGHmed – An Open Platform Approach Unfolds

Stefan Becker
Managing Director

Dr. Mathias Göschl
Sr. Project Manager Digital Health

Dirk Roßbach
Platform Manager Digital Health

Berlin - January 31st, 2025

HiGHmed - A Network of Digital Health Leaders

HiGHmed is a large-scale and publicly funded clinical network with sites in Germany and Luxembourg

Its goal is to improve the accessibility of medical patient data for care and research

To achieve this, HiGHmed has engineered an open data platform based on the concept of Medical Data Integration Centers (MeDICs)

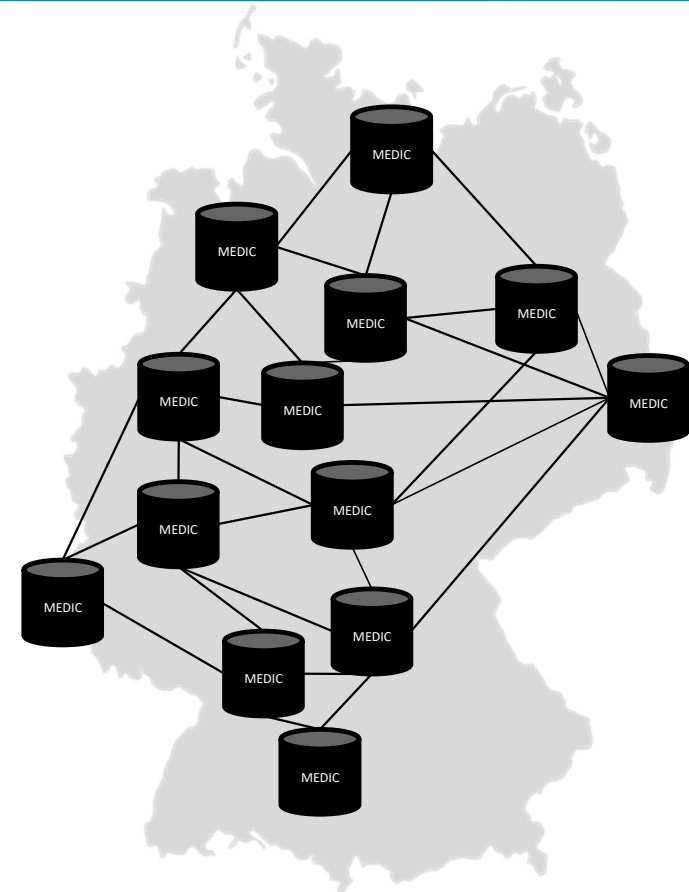


HiGHmed - A Network of Digital Health Leaders

HiGHmed is a large-scale and publicly funded clinical network with sites in Germany and Luxembourg

Its goal is to improve the accessibility of medical patient data for care and research

To achieve this, HiGHmed has engineered an open data platform based on the concept of Medical Data Integration Centers (MeDICs)



HiGHmed e.V. – Because Sustainability Matters



Founded in 2019 as a ,spin-off‘ of the HiGHmed consortium

Supported by all of HiGHmed’s clinical sites

Focus: Sustainable Establishment and further development of structures and solutions developed within HiGHmed

HiGHmed & openEHR: A Collaborative Partnership



International Networking

HiGHmed facilitates opportunities for international collaboration and knowledge sharing regarding openEHR



Project Participation

HiGHmed fosters project participation within Germany to broaden the adoption of openEHR



Know-how Development

HiGHmed builds and shares expertise in openEHR through training and knowledge transfer



Model Development

HiGHmed has established a dedicated modeling group to enhance openEHR model development



But HiGHmed did more...

... especially on the tooling side

Tools made by HiGHmed

EHRbase



The first open-source backend for openEHR systems

(in collaboration with Vitagroup)

NUM-RDP Central Research Repository



A nationwide platform for centralized
COVID-19 research data

FHIR Bridge



Connecting HL7 FHIR and openEHR
seamlessly

CODEX Portal



Manages authentication and workflows for accessing
research data

Cohort Explorer



Facilitates targeted searches of large datasets
within an openEHR-based CDR

Test Data Generator



Provides HL7 FHIR and MII-KDS compliant test datasets
for quality assurance

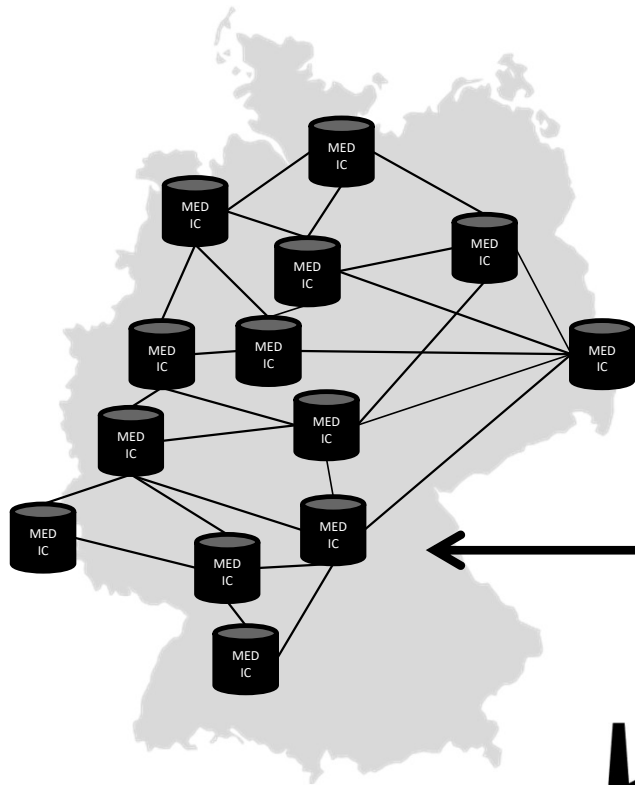
to be continued....

MeDIC: Data Integration, Value Exploitation

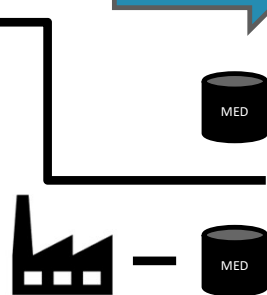
Medical Data Integration Centers (MeDIC)

contains: Clinical Data Repository (CDR) **openEHR**

supported by: organization & IT infrastructure



HIS, PDMS, external (Lab, IoT, etc...)



internal: process support (apps), research

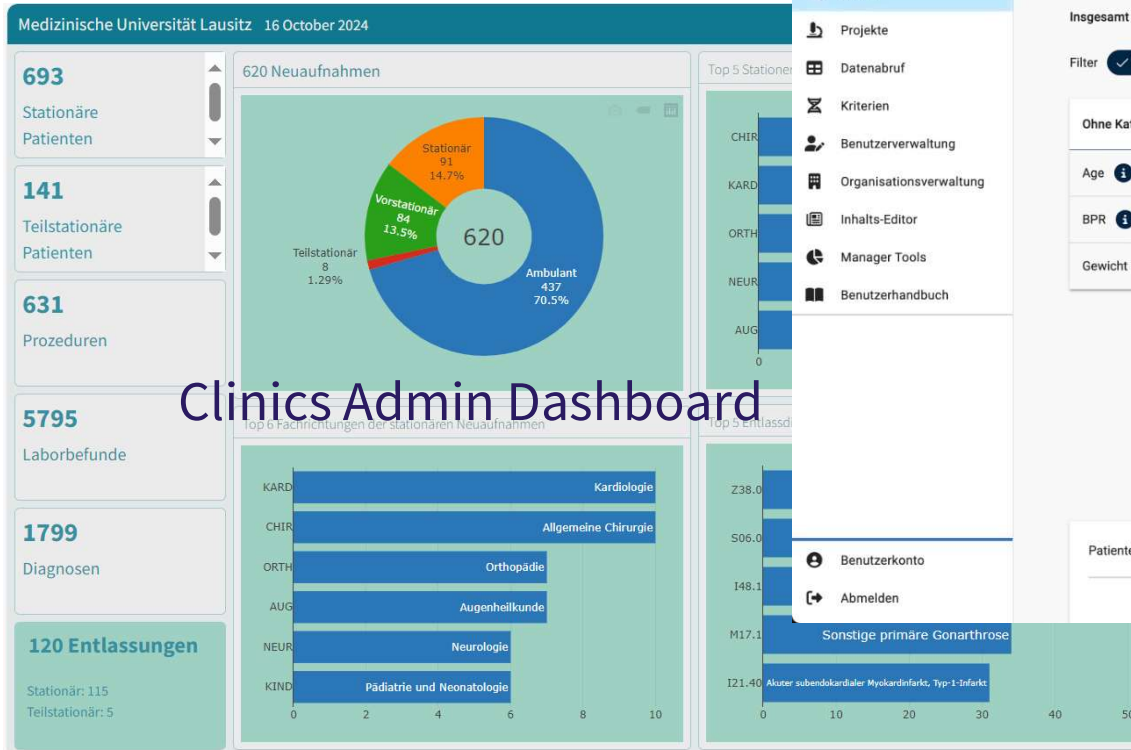
network: research, networked care

3rd party: product/drug development

TARGET

Apps from our partners !

Clinics Admin Dashboard



Clinics Admin Dashboard



Suche

- Projekte
- Datenabruf
- Kriterien
- Benutzerverwaltung
- Organisationsverwaltung
- Inhalts-Editor
- Manager Tools
- Benutzerhandbuch

Benutzerkonto

Abmelden

Patientenfilter

Wählen Sie eine oder mehrere Kriterien aus der Liste aus um die Grundlage der neuen Kohorte zu definieren.

Insgesamt verfügbare Datensätze: 1062

Filter ☒ Alle ☐ Meine ☐ Meine Organisation

Ohne Kategorie

Age

BPR

Gewicht

Cohort Explorer

Kriterium suchen

Hauptgruppe AND

Negation

Age

Untergruppe 1

Negation

1 Patient 2 Start-Ziel 3 Fahrt 4 Zusammenfassung

Informationen zum Patienten

Informationen zur Fahrt

Informationen zur Fahrt

Informationen zur Fahrt

Informationen zur Fahrt

Informationen zur Fahrt

Informationen zur Fahrt

Informationen zur Fahrt

Informationen zur Fahrt

Informationen zur Fahrt

Informationen zur Fahrt

Informationen zur Fahrt

Informationen zur Fahrt

Informationen zur Fahrt

Informationen zur Fahrt

Informationen zur Fahrt

Informationen zur Fahrt

Informationen zur Fahrt

Informationen zur Fahrt

Informationen zur Fahrt

Informationen zur Fahrt

Informationen zur Fahrt

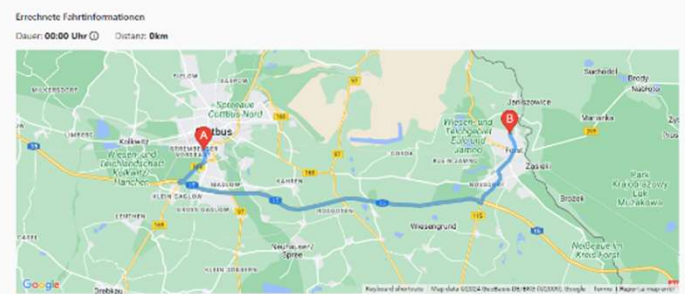
Informationen zur Fahrt

credits: S. Ortmann, Thiem-Research Cottbus

January, 31st. 2025

HiGHmed – An Open Platform Approach Unfolds

Patient Transportation





Like it ? Let's go ...
... from vision to product

DevOps View / User View: One pragmatic solution



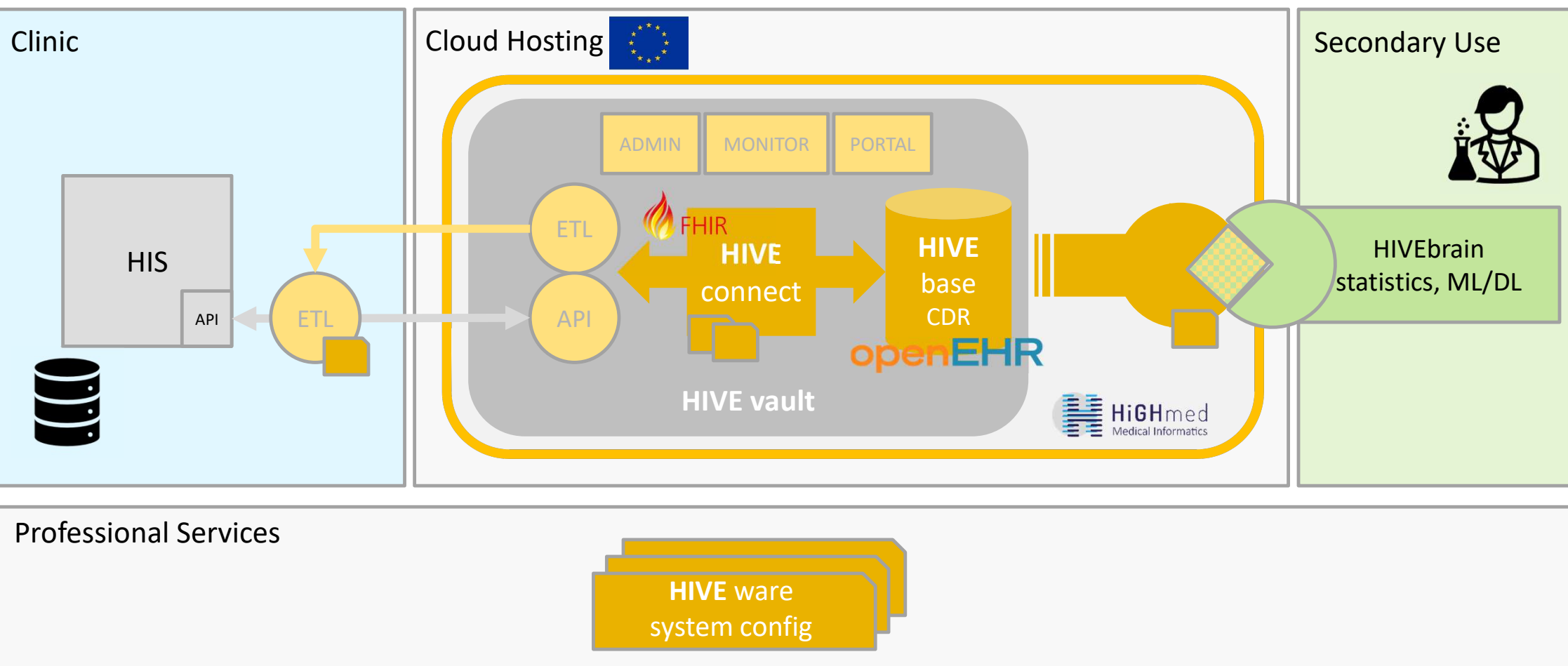
to master system complexity using state-of-the-art CI/CD
collaborate with key industry partners
and of course, *benefit* from a scalable cloud architecture

HIVEsuite: economic, compliant and scalable



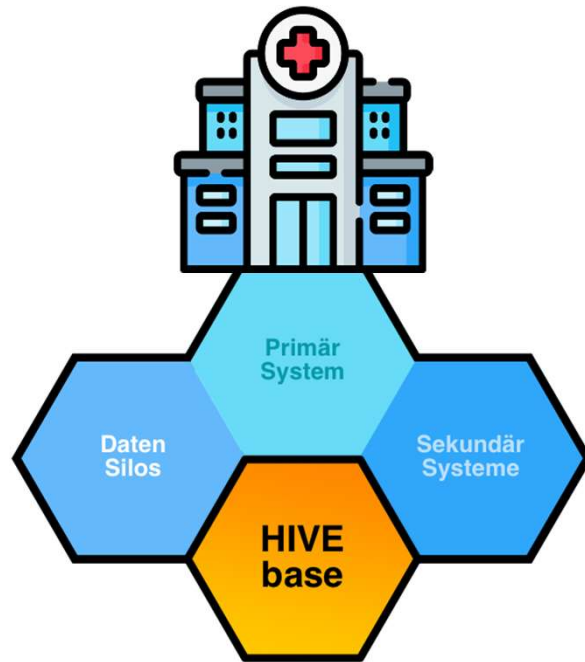
rely upon mature and future-proof data structures
securely operate in a professionally maintained environment
efficiently use talented resources: real challenges vs. routine
tap into innovation, best practices and a powerful community

HiGHmed HIVEsuite: Components

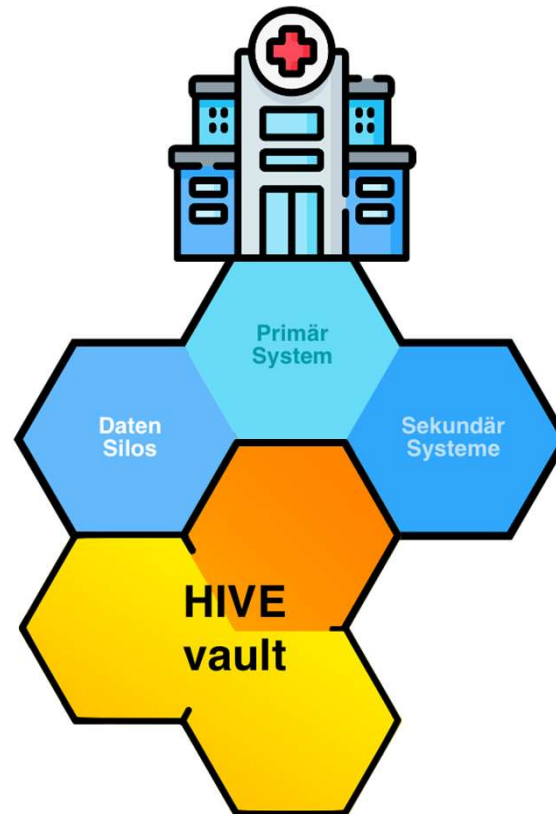


HIVSuite Components + Services = Solutions

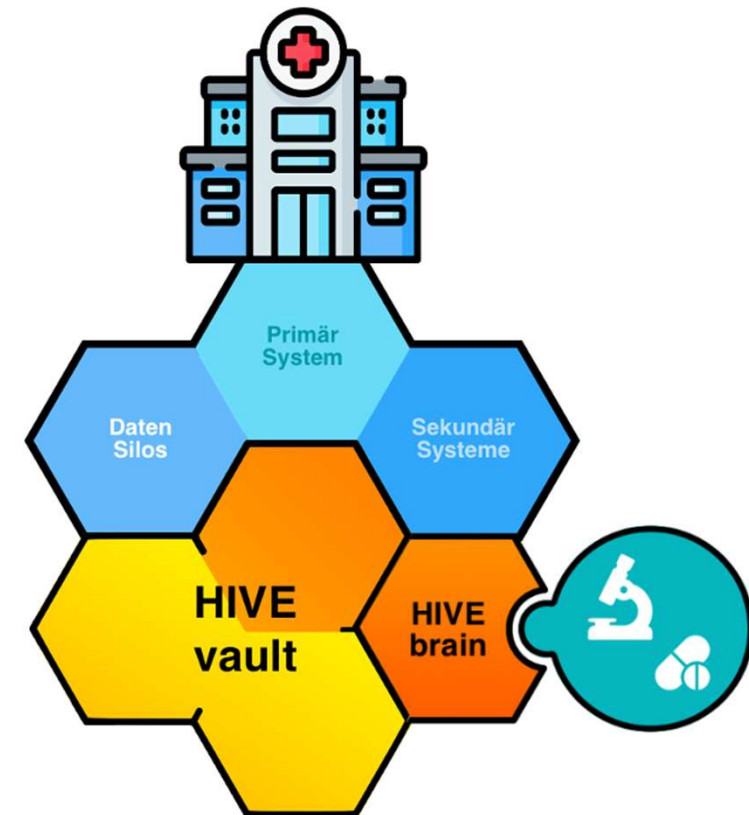
"CDR only" (permanent, pop-up)



"MeDIC - type" setup



„Content Factory“





The easiest way to convince someone of something

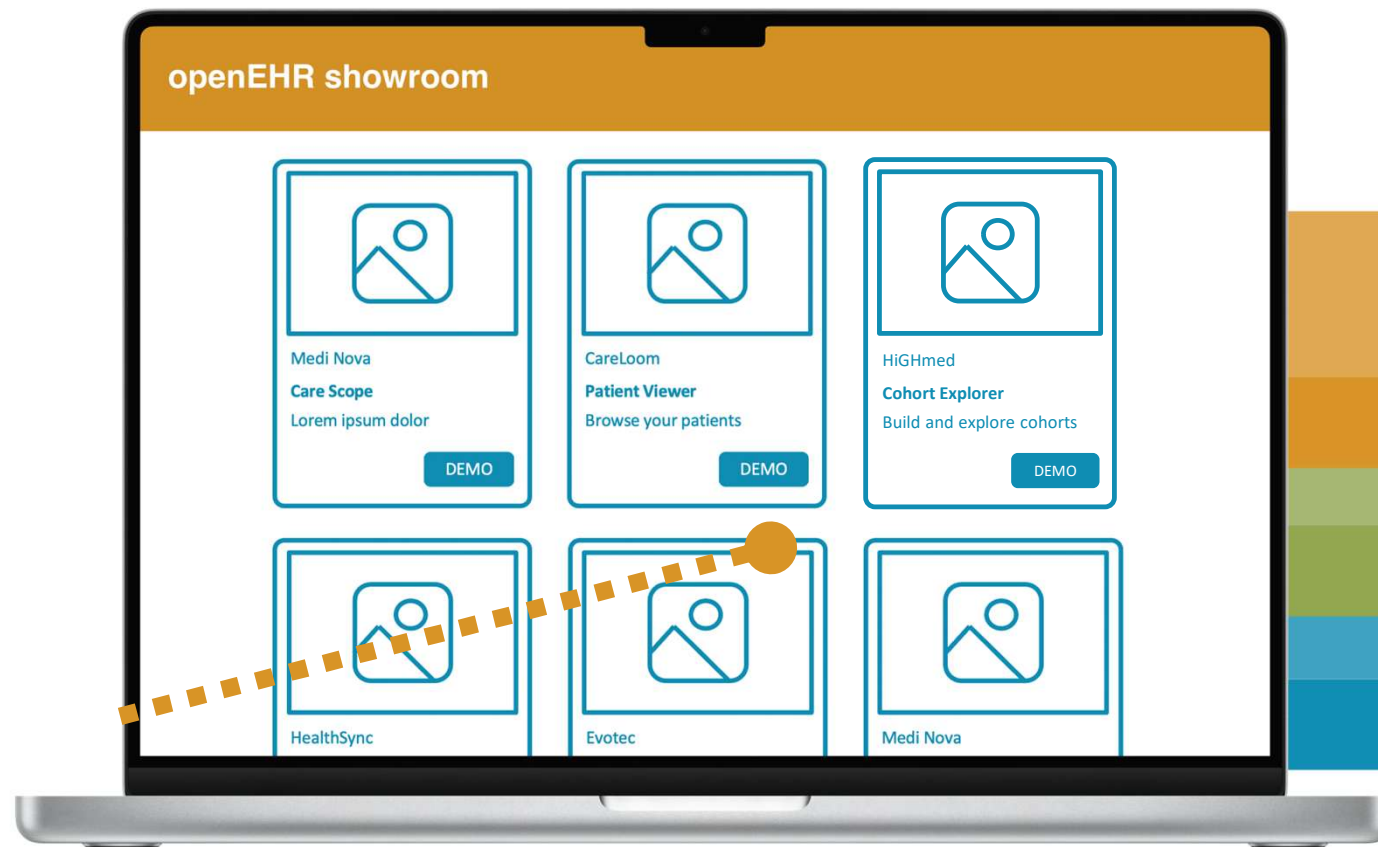
TALK less.
SHOW more.



How to bring a technical standard to life?

January, 31st. 2025

openEHR





www.ehrshow.eu



Coming to the community
SUMMER 25

Submit your app
TODAY



Let's grow together



January, 31st. 2025

HiGHmed – An Open Platform Approach Unfolds